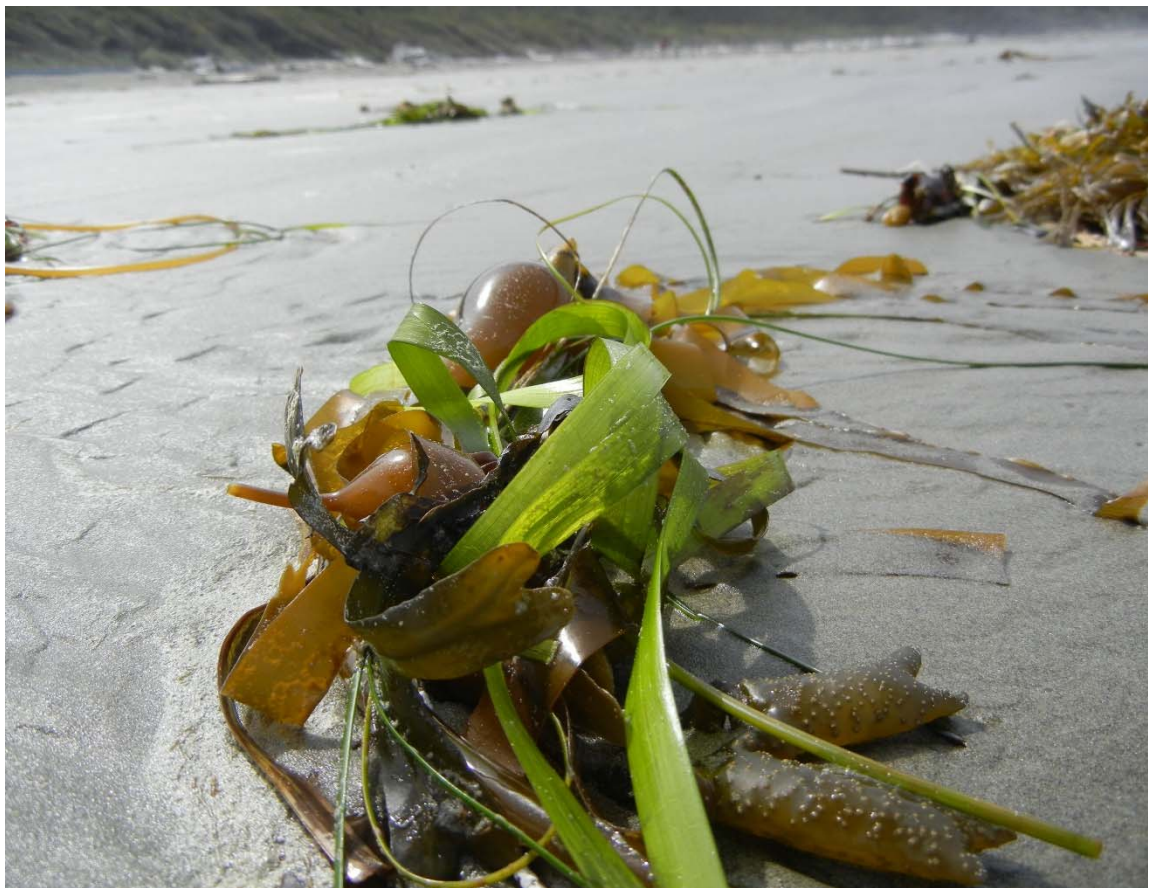


# REGIONAL REPORT FOR CANADA 2018



5/23/2018

Regional Report - IASSIST – Montreal, Quebec, Canada

This regional report for the year ending May 1, 2018 has been compiled and submitted by Carol Perry, IASSIST Regional Secretary for Canada.

## Contents

<b>OVERVIEW</b> .....	<b>2</b>
<b>MEMBERSHIP</b> .....	<b>2</b>
<b>PORTAGE (CARL)</b> .....	<b>2</b>
<b>DATA LIBERATION INITIATIVE (DLI)</b> .....	<b>3</b>
<b>CANADIAN RESEARCH DATA CENTRE NETWORK (CRDCN)</b> .....	<b>4</b>
<b>OCUL/SCHOLARS PORTAL <a href="https://dataverse.scholarsportal.info/">HTTPS://DATAVERSE.SCHOLARSPORTAL.INFO/</a></b> .....	<b>4</b>
<b>CANADIAN MEMBERS</b> .....	<b>4</b>
<b>PHOTO CREDIT</b> .....	<b>5</b>

# Regional report for Canada 2018

## REGIONAL REPORT - IASSIST – MONTREAL, QUEBEC, CANADA

### OVERVIEW

There have been numerous exciting and innovative initiatives underway again this year across Canada.

Stakeholders from a variety of government agencies, organizations and universities continue to collaborate in a meaningful way to establish infrastructure in support of research data. Federal government funding for research and research infrastructure is facilitating this rapid change.

The CARL-based Portage network continues to mature as a national initiative developing support mechanisms for RDM.

Research Data Canada has evolved into a forum where multiple stakeholders can work together to develop policies and build infrastructure around research data stewardship.

### MEMBERSHIP

As of May 1, 2018 there were 74 active IASSIST members from Canada, up considerably from last year's membership count of 48.

This increase in membership will, undoubtedly, be linked to the location of this year's conference in Montreal.

### PORTAGE (CARL)

<https://portagenetwork.ca/>

The Canadian Association of Research Libraries (CARL) Portage Network is completing its third year of existence. A new governance structure is in place. Jeff Moon has been very active this year as the new Portage Director, promoting network initiatives to relevant stakeholders across the country. Several major initiatives include:

- Portage Preservation Pipeline
- Network of Expertise Groups
- DMP Assistant

Currently, the DMP Assistant platform is being migrated to the new integrated Roadmap version. Expectations are that it will be up and running later in the fall 2018.

The network has partnered with other stakeholders on a number of new initiatives including the Federated Research Data Repository (FRDR) project which is now in limited production mode. This joint project of CARL/Portage and Compute Canada now provides Canadian researchers with a preservation platform for big data and acts as a Canadian data repository portal for providing access to research data from across the country. Collections from Canadian repositories are being indexed within the portal.

The Network of Expertise Groups continue to develop sustainable support mechanisms for RDM across Canada. New groups include:

- Preservation Expert Group
- Research Intelligence Working Group
- Curation Expert Group
- Data Discovery Expert Group

Working groups are formed for specific projects of the Expert Groups. One example is the *Institutional RDM Strategy Working Group*, comprised of members representing a variety of stakeholders from across Canada . This group developed a draft template and supporting guidance document for research institutions to use when creating internal policies around RDM. The development of internal policies is highlighted in the Tri-Agency Statement of Principles on Digital Data Management as an expectation of institutions [http://www.science.gc.ca/eic/site/063.nsf/eng/h\\_83F7624E.html](http://www.science.gc.ca/eic/site/063.nsf/eng/h_83F7624E.html).

The Dataverse North Working Group is a collaboration between members from institutions using the Dataverse repository Platform. This group is exploring the potential for developing collaborative supports across the institutions to harmonize infrastructure, methods, processes, and protocols in support of data preservation in the context of the Dataverse platform.

## DATA LIBERATION INITIATIVE (DLI)

<https://www.statcan.gc.ca/eng/dli/dli>

The Data Liberation Initiative (DLI) partnership between post-secondary institutions and Statistics Canada continues to strengthen and grow in its goal to provide improved access to Canadian data resources.

There have been a number of organizational and staff changes during the past year. The EAC membership is also evolving as people move on to other opportunities. Currently, three positions are open.

Regional training took place again during 2017 with sessions provided in the four regions, Atlantic, Quebec, Ontario, ACCOLEDS (West) reaching 120 data service providers. Specialized data-related sessions focused on the development of basic skills and competencies of the data professional. More advanced training is currently being developed. This training has been augmented with webinars related to specific survey products including the General Social Survey (GSS) Victimization files.

Eight new data products were added to the collection in 2017 with new arrivals in early 2018. This brings the total number of products in the collection to more than 450 surveys.

The DDI project has been making major strides adding coding to Statistics Canada products. In 2017, 69 PUMF files and 76 Public Masterfile datasets were coded with DDI metadata and added to the Nesstar server. Funding was secured in support of this project for another three years.

The focus in the coming year will continue to be improving technical infrastructure, consulting with the community on program developments and enhancing data service deliver.

Information provided by [Geneviève Jourdain, Statistics Canada](#)

## CANADIAN RESEARCH DATA CENTRE NETWORK (CRDCN)

<https://crdcn.org/>

The CRDCN, in partnership with Statistics Canada, consists of secure data centres located on university campuses across Canada. These centres (15 centres, 15 branches) provide approved researchers with access to analyze a vast array of Canadian social, economic and health microdata.

The network is now receiving funds annually from three successful major funding program applications.

1. Social Sciences and Humanities Research Council (SSHRC) and Canadian Institute of Health Research (CIHR) directed grant totaling \$14.5 over 5 years.
2. Canadian Foundation for Innovation (CFI) award of \$5.9 million over 5 years from its Major Science Initiatives Fund.
3. Canadian Foundation for Innovation (CFI) award of \$2.6 million over 5 years from its Innovation Fund Program.

This funding is allowing for the expansion of the network to new campuses as well as improving infrastructure and introducing administrative data to the collections available to researchers. Over the next two years the network will move to a thin client operation allowing for extended hours of service.

The network, in collaboration with data providers, has secured administrative data from federal and provincial jurisdictions that can, in some cases, be linked to survey data. This major development has the potential to rapidly advance policy-related research in Canada.

## OCUL/SCHOLARS PORTAL

<HTTPS://DATAVERSE.SCHOLARSPORTAL.INFO/>

Scholars Portal (SP) continues to provide digital data infrastructure in support of research data services at university libraries across Ontario. Over the past year, SP has worked to develop its shared Dataverse repository for research data collected and deposited with university libraries across the province (<http://dataverse.scholarsportal.info>).

The repository now includes over 1,200 datasets, including over 21,000 data files, representing significant growth over the past year. SP Dataverse recently upgraded to version 4.8.6 with improved usage statistics reporting as well as improved Google indexing and faster uploading of large file bundles.

SP and the Ontario Council of University Libraries (<http://ocul.on.ca>) are working closely with national providers such as the Canadian Association of Research Libraries (CARL) Portage Network (<https://portagenetwork.ca/>), through the Dataverse North collaboration (<https://portagenetwork.ca/dataverse-north-working-group/>) and other community initiatives. See the CARL Portage section for details.

## CANADIAN MEMBERS

Marilyn Andrews, University of Regina, is Chair IASSIST Communications Committee 2017-2019

Jay Brodeur, McMaster University, Co-chair, IASSIST Program Committee 2018

Amber Leahy, Scholars Portal, is IASSIST Regional Treasurer (Canada) and IASSIST Member at Large (Canada) 2017-2021

Carol Perry, University of Guelph, is IASSIST Regional Secretary for Canada 2017-2019

Berenica Vejvoda, McGill University, is IASSIST Member at Large (Canada) 2015-2019

## PHOTO CREDIT

Cover photo by Robert Groves 2012. Used with permission.