

Metadata Share Project

electronic data center
Emory University General Libraries



Project Scope

Background and Goals

Background

- Our institutions support data collections that are similar/complimentary
- Current data documentation is inefficient and results in much unnecessary duplication of effort
- Our idea - divide up metadata creation and share records across institutions

Desired Outcomes and "Deliverables"

- Process/tools in place for creation of metadata instances
- Collection of (valid!) DDI instances for our various data resources
- Sharing of instances across institutions for each of us to borrow and adapt for particular needs

Intended Goals:

- Enhanced Searching/Discovery of Data Resources
- Sharing of DDI Instances
- Facilitation of Participation in Other Digital Library Initiatives

Goal #1 - Enhanced Search and Discovery

- Descriptions of data resources in library catalogs are often thin
- DDI allows for more "rich" descriptions with greater amount of *useful* detail
- Provide users with options for more powerful and controlled searches

Goal #2 - Sharing Records

- Take advantage of common resources across collections
- Strengthen catalogs of holdings and resources
- Reduce amount of time that would be devoted to metadata creation

Goal #3 - Participate in Digital Initiatives

- Trend across libraries to consolidate searching of holdings and databases into one interface

Implementation - Creating and Sharing Instances

- Identification of DDI Tags
- Standardization of Values for Elements and Attributes
- Metadata Entry
- Comparability and Sharing Across Institutions

Identification of DDI Tags

- Examples and Templates - e.g. ICPSR abstracts
- Standard: DDI 2.1
- <docDscr/> - Instance Itself
- <stdyDscr/> - Geography, Time, Contents
- <fileDscr/> - File Formats
- Utilizing Repeatable Elements and <notes/>

Standardization of Values for Elements and Attributes:

- Variation across resources in documentation, terminology
- Absence of controlled vocabularies
- E.G. <nation/> and Country Names

Metadata Entry

- Emory - webform
(<http://cti.library.emory.edu/EDC/datafreewayform/>)

Data Freeway Form

KEY:
* - required element
G - showhide global attributes
attribute
global attribute

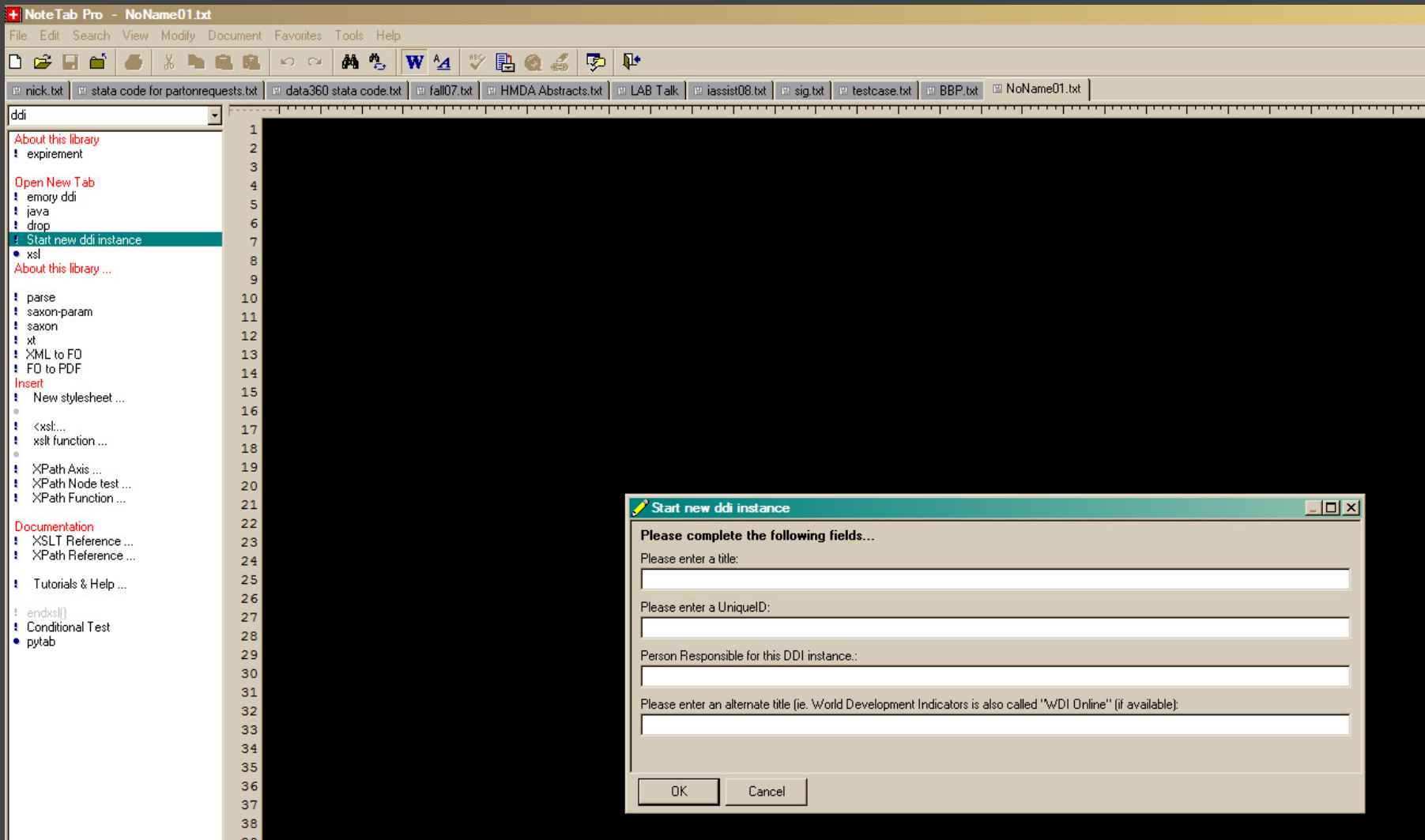
All dates should be input in YYYY-MM-DD format.

[Show all global attributes.](#)

- CodeBook *	<input type="text"/>	codeBook
- Document Description Add	<input type="text"/>	docDesc
- Citation	<input type="text"/>	citation
- Title Statement *	<input type="text"/>	titStat
- Title 1.1.1.1	<input type="text"/>	tit
- ID # 1.1.1.5	<input type="text"/> Add	IDNo
	Agency <input type="text"/> Level <input type="text"/>	
- Responsibility Statement	<input type="text"/>	respStat
- Authoring Entity 1.1.2.1	<input type="text"/> Add	AuthEnty
	Affiliation <input type="text"/>	
- Other Identifications 1.1.2.2	<input type="text"/> Add	othId
	Affiliation <input type="text"/> Role <input type="text"/>	
- Production Statement	<input type="text"/>	prodStat
- Producer 1.1.3.1	<input type="text"/> Add	producer
	Affiliation <input type="text"/> Role <input type="text"/>	
- Copyright 1.1.3.2	<input type="text"/>	copyright
- Production Date 1.1.3.3	<input type="text"/> Add	prodDate

Metadata Entry

- Duke - NoteTab template



Examples

IRIS Dataset - current Duke interface

<http://library.duke.edu/cgi-bin/data/dao.cgi?keywords=iris>

IRIS Dataset - working draft of DDI version (next slide)

[Duke Libraries](#) > [Perkins Data Services](#) - Iris Dataset

Iris Dataset

IDNO: 350198419

Principal Investigator(s): Knack, Steve *IRIS Center at the University of Maryland*
Keefer, Philip *IRIS Center at the University of Maryland*

Abstract: The IRIS Dataset was originally constructed in 1993 by Steve Knack and Philip Keefer for the IRIS Center at the University of Maryland, based on data obtained from the International Country Risk Guide (ICRG). The dataset includes computed scores for six ICRG political risk variables: corruption in government, rule of law, bureaucratic quality, ethnic tensions, repudiation of contracts by government, and risk of expropriation. Knack produced subsequent issues of the data for an ongoing series of working papers from the IRIS Center.

Related Terms: corruption, risk, political risk, expropriation, icrg

Coverage

Dates of Coverage: 1982 to 1997

Geographic Coverage: global

Smallest Geographic Unit: country

Methods

Analytic Unit: county-year

Access: <http://library.duke.edu/data/duke-only/iris/iris.zip>

Restrictions:

Data are restricted to current Duke faculty, staff, and students only. Redistribution is prohibited.

DAO Version Date: February 21, 2008

This DDI instance was developed as part of a joint initiative between Emory's Electronic Data Center and Duke's Data and GIS Services.

Comparability and Sharing

- Exchanging Records
- Checking for Duplication
- Evaluating Access Restrictions

Challenges

- Inter-Coder Reliability
- Institutional Priorities

Challenge #1 - Inter-Coder Reliability

- Lack of controlled vocabularies
- Differences in emphasis on and intent of use of resources
- Entry by students not familiar with metadata or data

Challenge #2 - Institutional Priorities

- Need for programming support
- 'Data's' Role in the 'Digital' Library

Conclusions

Conclusions

- Metadata entry is the greatest hurdle to adopting DDI.

Conclusions

- Metadata entry is the greatest hurdle to adopting DDI.
- Identifying a controlled vocabulary for DDI instances presents localization challenges when sharing records.

Conclusions

- Metadata entry is the greatest hurdle to adopting DDI.
- Identifying a controlled vocabulary for DDI instances presents localization challenges when sharing records.
- Sharing DDI records enhances the holdings of each institution and leaves more time for working with researchers.

Metadata Share Project

Joel Herndon
Duke University
Perkins Library
joel.herndon@duke.edu
<http://library.duke.edu/data>

Rob O'Reilly
Emory University
Woodruff Library
roreill@emory.edu
<http://einstein.library.emory.edu>

I have no idea what you're talking about...



...so here's a bunny with a pancake on its head.